

在二十世紀，特別是近二、三十年來人們對提高建築物的抗震動能力做了巨大的努力且已取得顯著的成果，其中最引以為傲的是「結構的保護系統」。人們跳脫傳統增強樑、柱、牆來提高抗震動能力的觀念，結合結構的動力性能，巧妙的避免或減少了地震及風力的破壞。黏滯型阻尼器是屬於制震設備的一環，在建築中不僅能減緩地震波所造成的震幅，也可以使結構中的金屬較不易因疲勞現象而迅速斷裂，並可以在建築倒下時減緩其速度，利於逃生與救援，更是具備無需破壞建築物結構即可安裝的特性。

In the 20th century, especially in the past two or three decades, people have made great efforts to improve the anti-vibration capability of buildings and achieved remarkable results. One of them is "structural protection system". People combine the performance of the structure instead of increasing beams, columns and walls to improve their ability to resist vibration, which ingeniously avoid or reduce the damage of earthquakes and wind. The viscous dampers belong to a part of the vibration control equipment. The dampers in buildings not only slow down the vibration caused by the earthquakes, but also make the metal in the structure not easily fatigued and quickly broken. They can slow down the rate of the collapsing buildings, which is good for escaping and rescuing. In addition, the viscous dampers are equipped with the features that can be installed easily without destroying the structure of the buildings.

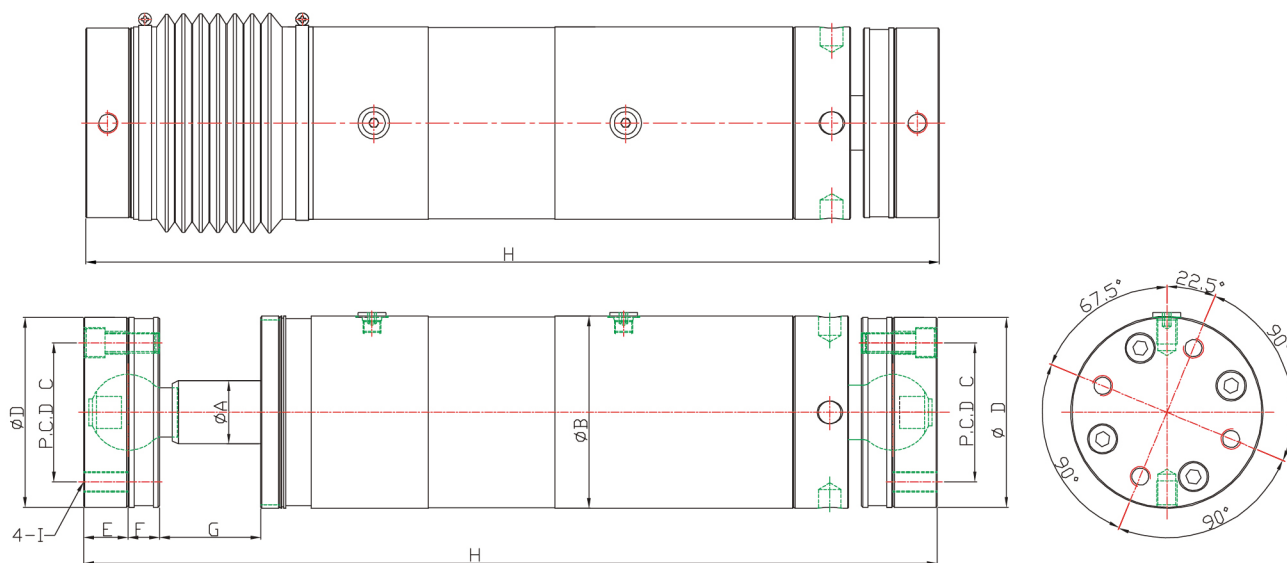
- ◆ 阻尼特性不受溫度影響。
- ◆ 從微小變位到大變位時，阻尼特性安定。
- ◆ 反覆作動性能安定。
- ◆ 大地震過後可以再使用。
- ◆ 產品可以客製化。
- ◆ 阻尼力可變控制。
- ◆ Not affected by temperatures.
- ◆ Stable from a tiny change position to a large change position.
- ◆ Stable performance under repeated action.
- ◆ Reusable after big earthquakes.
- ◆ Customized.
- ◆ Variable control of damping force.

標準型阻尼器規格 Specification of Standard Dampers

阻尼器 Damper	型號 Model	特性 Feature	阻尼力 Damping Force (KN)	外徑 OD (φB)	行程 Stroke (± mm)	聯結方式 Connect	防塵套 Dust Cover
DPA	S (標準型) Standard Type P (預壓型) Preload Type	S (非線性) Non-linearity	300	152	50	FA : 法蘭式 Flange Type MI : 固定插銷式 Fixed Pin Type PH : 關節軸承式 Radial Spherical Plain Bearing Type	R : 橡膠 Rubber M : 金屬 Metal
			400				
			500	178			
			600	190			
			800	216			
			900	242			

標準型 法蘭式 (FA) Standard Type - Flange Type (FA)

DPA-S-S-***-***-***-FA-*

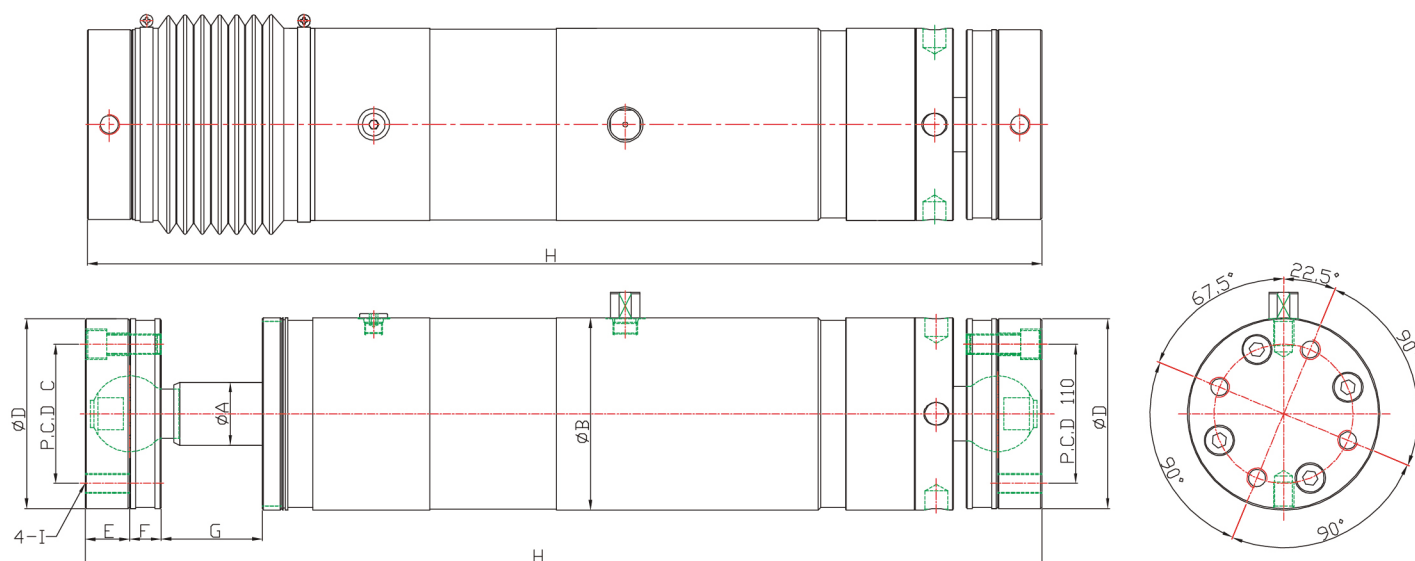


尺寸 Dimension

最大阻尼力 Max. Damping Force (kN)	行程 Stroke (mm)	Ø A (mm)	Ø B (mm)	C (mm)	Ø D (mm)	E (mm)	F (mm)	G (mm)	H (mm)	I
300	± 50	Ø 50	Ø 152	110	Ø 145	35	25	65	675	M16 x 2.0
400	± 50	Ø 50	Ø 152	110	Ø 145	35	25	65	685	M16 x 2.0
500	± 50	Ø 70	Ø 178	126	Ø 170	45	30	65	720	M20 x 2.5
600	± 50	Ø 70	Ø 190	126	Ø 170	45	30	65	725	M22 x 2.5
800	± 50	Ø 80	Ø 216	146	Ø 200	50	35	65	765	M24 x 3.0
900	± 50	Ø 90	Ø 242	166	Ø 220	60	40	70	815	M24 x 3.0

預壓型 法蘭式 (FA) Preload Type - Flange Type (FA)

DPA-P-S-***-***-***-FA-*

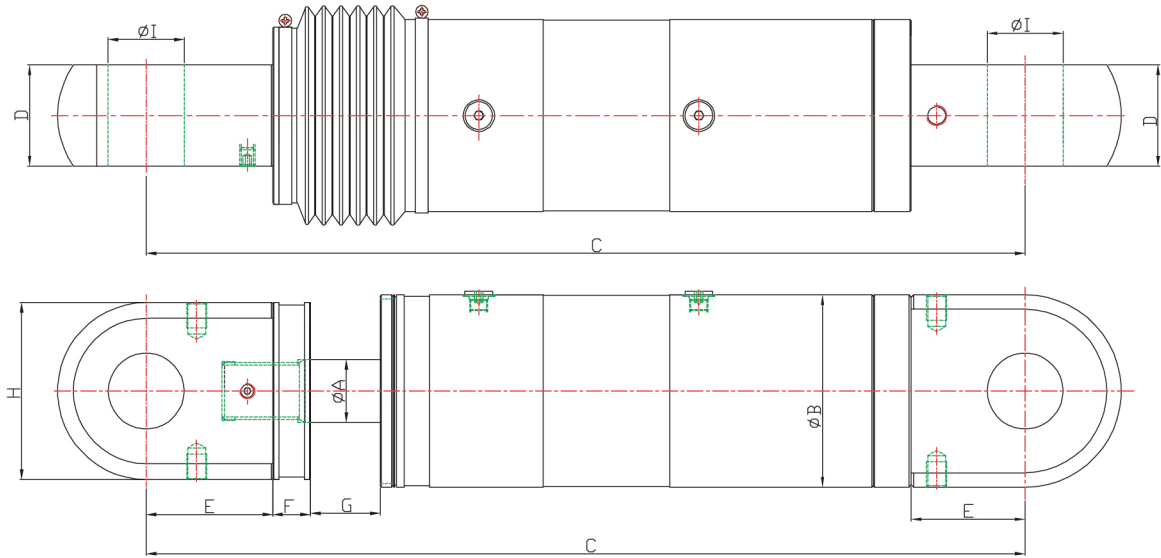


尺寸 Dimension

最大阻尼力 Max. Damping Force (kN)	行程 Stroke (mm)	Ø A (mm)	Ø B (mm)	C (mm)	Ø D (mm)	E (mm)	F (mm)	G (mm)	H (mm)	I
300	± 50	Ø 50	Ø 152	110	Ø 145	35	25	80	745	M16 x 2.0
400	± 50	Ø 50	Ø 152	110	Ø 145	35	25	80	755	M16 x 2.0
500	± 50	Ø 70	Ø 178	126	Ø 170	45	30	80	800	M20 x 2.5
600	± 50	Ø 70	Ø 190	126	Ø 170	45	30	80	805	M22 x 2.5
800	± 50	Ø 80	Ø 216	146	Ø 200	50	35	80	855	M24 x 3.0
900	± 50	Ø 90	Ø 242	166	Ø 220	60	40	85	895	M24 x 3.0

標準型 固定插銷式 (MI) Standard Type - Fixed Pin Type (MI)

DPA-S-S-***-***-***-MI-*

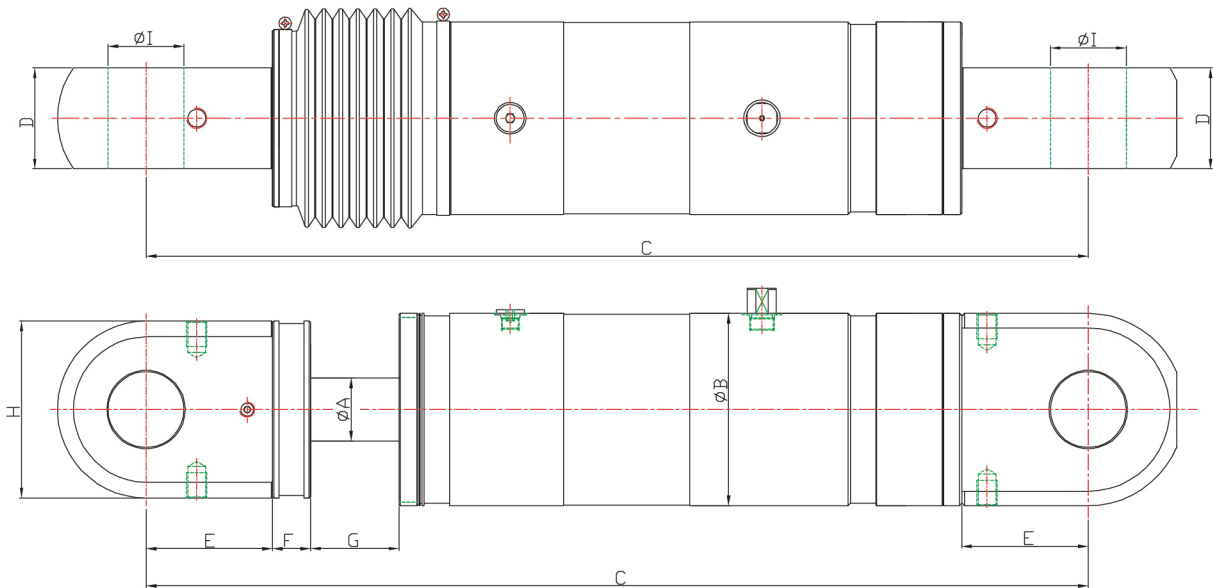


尺寸 Dimension

最大阻尼力 Max. Damping Force (kN)	行程 Stroke (mm)	Ø A (mm)	Ø B (mm)	C (mm)	D (mm)	E (mm)	F (mm)	G (mm)	H (mm)	Ø I (mm)
300	± 50	Ø 50	Ø 152	675	80	100	30	55	140	Ø 60
400	± 50	Ø 50	Ø 152	675	80	100	30	55	140	Ø 60
500	± 50	Ø 70	Ø 178	700	100	100	30	55	165	Ø 60
600	± 50	Ø 70	Ø 190	710	100	100	30	55	165	Ø 70
800	± 50	Ø 80	Ø 216	745	120	105	40	55	190	Ø 70
900	± 50	Ø 90	Ø 242	765	140	115	40	55	210	Ø 80

預壓型 固定插銷式 (MI) Preload Type - Fixed Pin Type (MI)

DPA-P-S-***-***-***-MI-*

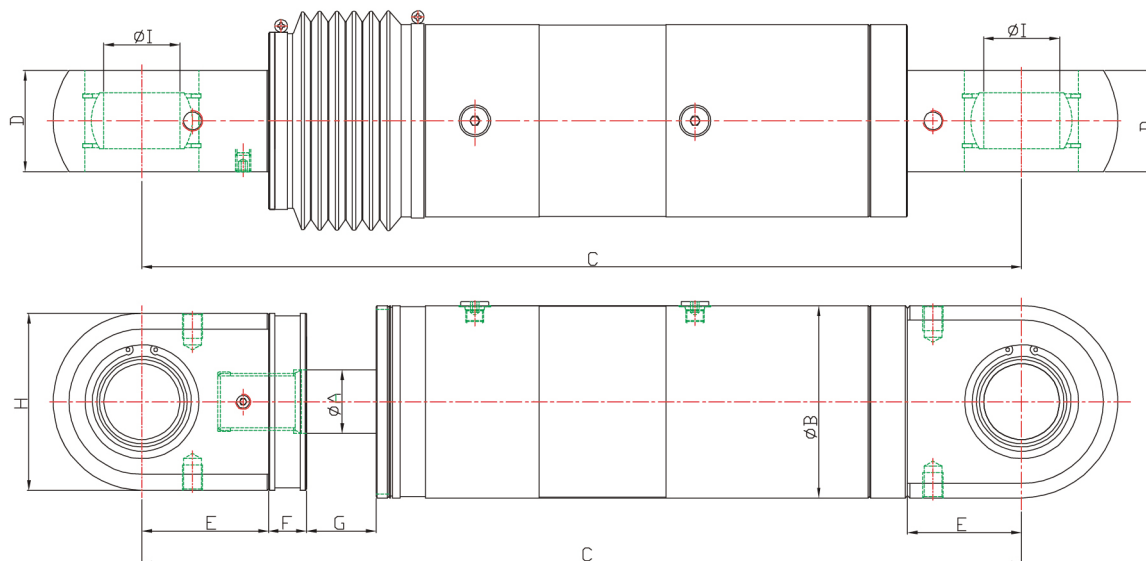


尺寸 Dimension

最大阻尼力 Max. Damping Force (kN)	行程 Stroke (mm)	Ø A (mm)	Ø B (mm)	C (mm)	D (mm)	E (mm)	F (mm)	G (mm)	H (mm)	Ø I (mm)
300	± 50	Ø 50	Ø 152	770	80	100	30	70	140	Ø 60
400	± 50	Ø 50	Ø 152	780	80	100	30	70	140	Ø 60
500	± 50	Ø 70	Ø 178	795	100	100	30	70	165	Ø 60
600	± 50	Ø 70	Ø 190	805	100	100	30	70	165	Ø 70
800	± 50	Ø 80	Ø 216	850	120	105	40	70	190	Ø 70
900	± 50	Ø 90	Ø 242	870	140	115	40	70	210	Ø 80

標準型 關節軸承式 (PH) Standard Type - Radial Spherical Plain Bearing Type (PH)

DPA-S-S-*-***-***-PH-***

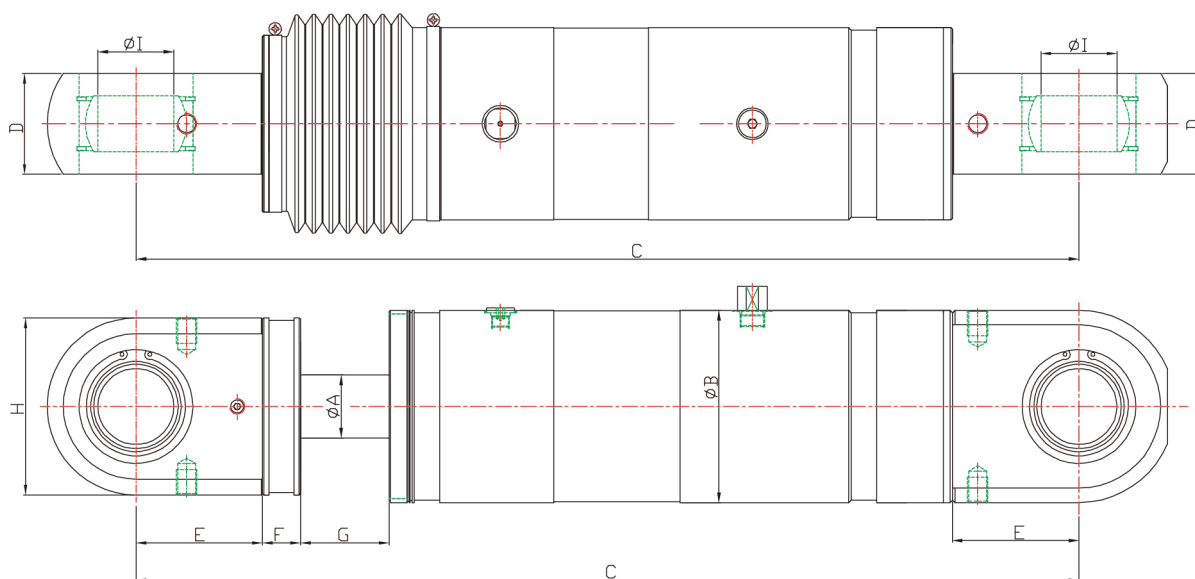


尺寸 Dimension

最大阻尼力 Max. Damping Force (KN)	行程 Stroke (mm)	Ø A (mm)	Ø B (mm)	C (mm)	D (mm)	E (mm)	F (mm)	G (mm)	H (mm)	Ø I (mm)
300	± 50	Ø 50	Ø 152	675	80	100	30	55	140	Ø 60
400	± 50	Ø 50	Ø 152	685	80	100	30	55	140	Ø 60
500	± 50	Ø 70	Ø 178	700	100	100	30	55	165	Ø 60
600	± 50	Ø 70	Ø 190	710	100	100	30	55	165	Ø 70
800	± 50	Ø 80	Ø 216	745	120	105	40	55	190	Ø 70
900	± 50	Ø 90	Ø 242	765	140	115	40	55	210	Ø 80

預壓型 關節軸承式 (PH) Preload Type - Radial Spherical Plain Bearing Type (PH)

DPA-P-S-*-***-***-PH-***



尺寸 Dimension

最大阻尼力 Max. Damping Force (KN)	行程 Stroke (mm)	Ø A (mm)	Ø B (mm)	C (mm)	D (mm)	E (mm)	F (mm)	G (mm)	H (mm)	Ø I (mm)
300	± 50	Ø 50	Ø 152	770	80	100	30	70	140	Ø 60
400	± 50	Ø 50	Ø 152	780	80	100	30	70	140	Ø 60
500	± 50	Ø 70	Ø 178	795	100	100	30	70	165	Ø 60
600	± 50	Ø 70	Ø 190	815	100	100	30	70	165	Ø 70
800	± 50	Ø 80	Ø 216	855	120	105	40	70	190	Ø 70
900	± 50	Ø 90	Ø 242	870	140	115	40	70	210	Ø 80